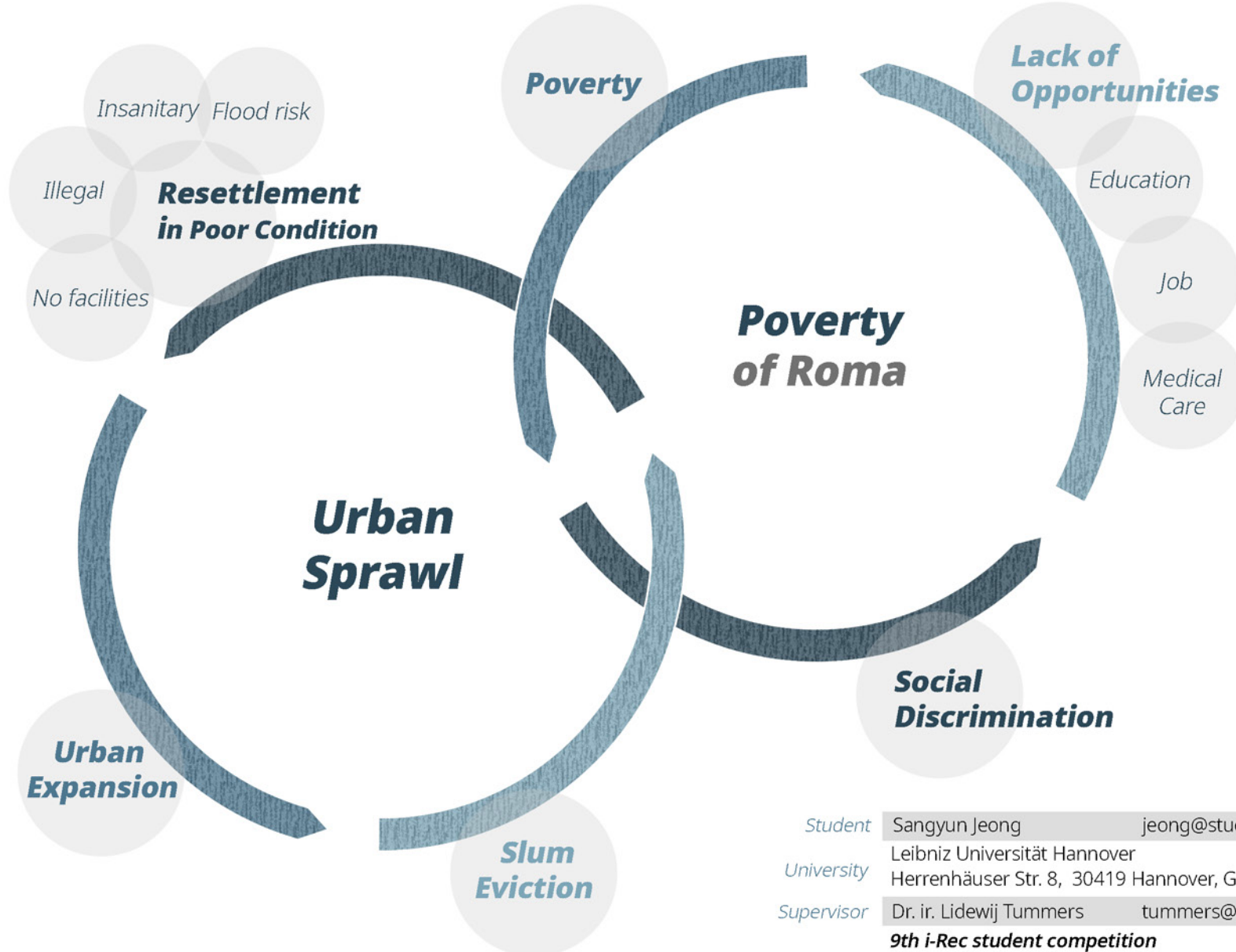
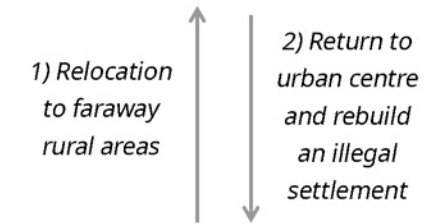


Roma Settlements on the Outskirt of Serbian Cities

Roma people are the third largest ethnic group in Serbia. Nevertheless, they are often discriminated and even excluded from the society. 93% of Roma are amongst the poorest 40% of the population in Serbia and 60.5% of the Roma live in extreme poverty. This segregation has a long history, however, various projects across Europe, mainly supported by EU, are taking place recently. Among others, the government is putting concerns on informal settlements which are developed by Roma on the outskirts of cities. Due to its serious condition, the relocation of inhabitants is unavoidable in some places. From the investigation, however, the method of relocation was found rather unsustainable.



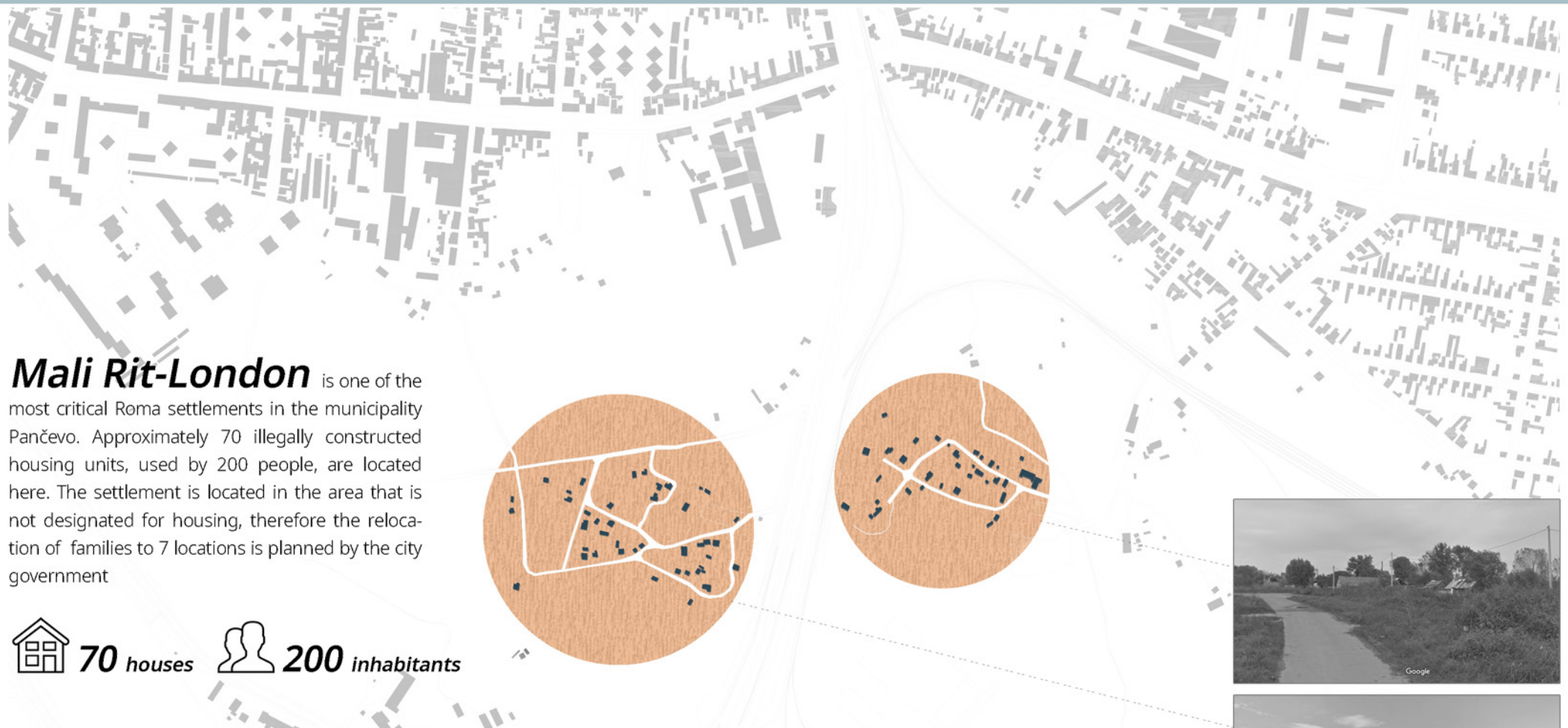
Lack of Job opportunities
Low accessibility to urban centre



Roma Community

Most of the Roma people who was relocated to rural areas without any context wasn't able to find the way to earn a living. Thus many of them returned to the city and found another informal settlements. To finish this status quo of the poverty of Roma people, new approach is needed.

Student	Sangyun Jeong	jeong@stud.uni-hannover.de	+49-177-212-9313
University	Leibniz Universität Hannover Faculty of Architecture and Landscape Sciences Herrenhäuser Str. 8, 30419 Hannover, Germany		+49-511-762-5495
Supervisor	Dr. ir. Lidewij Tummers	tummers@igt-arch.uni-hannover.de	+49-511-762-5531
9th i-Rec student competition		Hannover, Germany	May 2019



Mali Rit-London is one of the most critical Roma settlements in the municipality Pančevo. Approximately 70 illegally constructed housing units, used by 200 people, are located here. The settlement is located in the area that is not designated for housing, therefore the relocation of families to 7 locations is planned by the city government

 **70 houses**  **200 inhabitants**


Spatial Condition


The settlement was built about 50 years ago and since then there have been no activities aimed at solving the problems of the settlement. This informal settlement was developed without any plan or control, without adequate infrastructure, at a flood plain which is unsuitable for residential buildings. Water, electric supply system and public transport network doesn't exist. The facilities do not fulfil the condition for functional housing.


Socio-economic Condition


Many of the residents of Mali Rit-London make a living by recycling metal. Used cars are brought to the settlement and taken apart, to be resold as scrap or sheet metal. Due to the lack of education and social prejudices, it is difficult for many of them to get a proper job. Therefore, they are easily getting in the circumstance tempting them to commit an illegal act.




 **No urban plan**

 **No electricity**

 **No water supply**

 **No transport connection**

 **Economic vulnerability**



City Pančevo is located North of Serbia and 18km away from city Belgrade, the capital of Serbia. The city is located on **flat plains** and **the rivers Danube and Tamis** form its south and west borders.



According to the 2011 census, there are **76,203 inhabitants** in Pancevo and the average age of the population is **41.5 years** which is slightly younger than the average of the whole country (42.2). Average number of members in households is **2.8**.

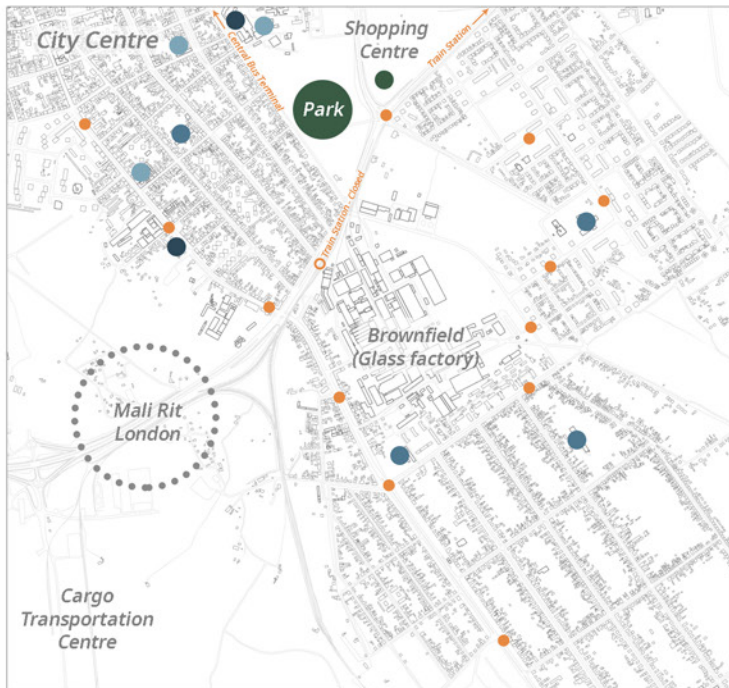
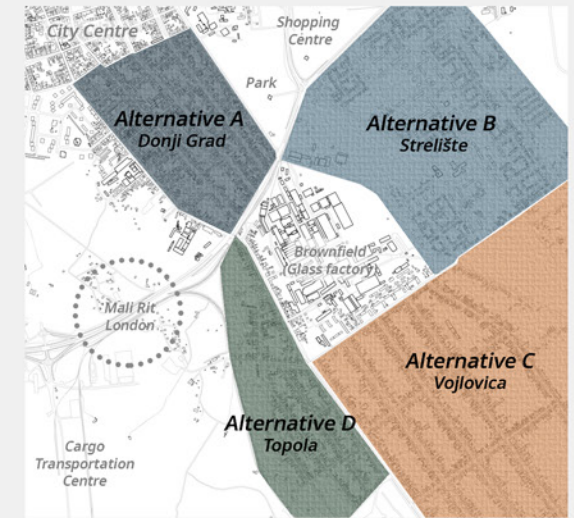


Most houses in province Vojvodina are constructed between **1919 and 1980** (Popovic and Ignjatovic, 2012). On the outskirts of the city, neighbourhoods are composed mainly of **old-style detached houses** made from brick and adobe. This could cause a problem in flood situation, as traditional adobe walls are found to be vulnerable to long term water exposure.



District Topola was chosen through a comparison within the four neighbouring districts of Mali rit-London by SWOT analysis.

- S** High flexibility (low density) and low land price
- W** Comparatively low living quality of the neighbourhood
- O** Close from Mali rit-London
- T** Risk in flood and comparatively low accessibility to urban centre and facilities

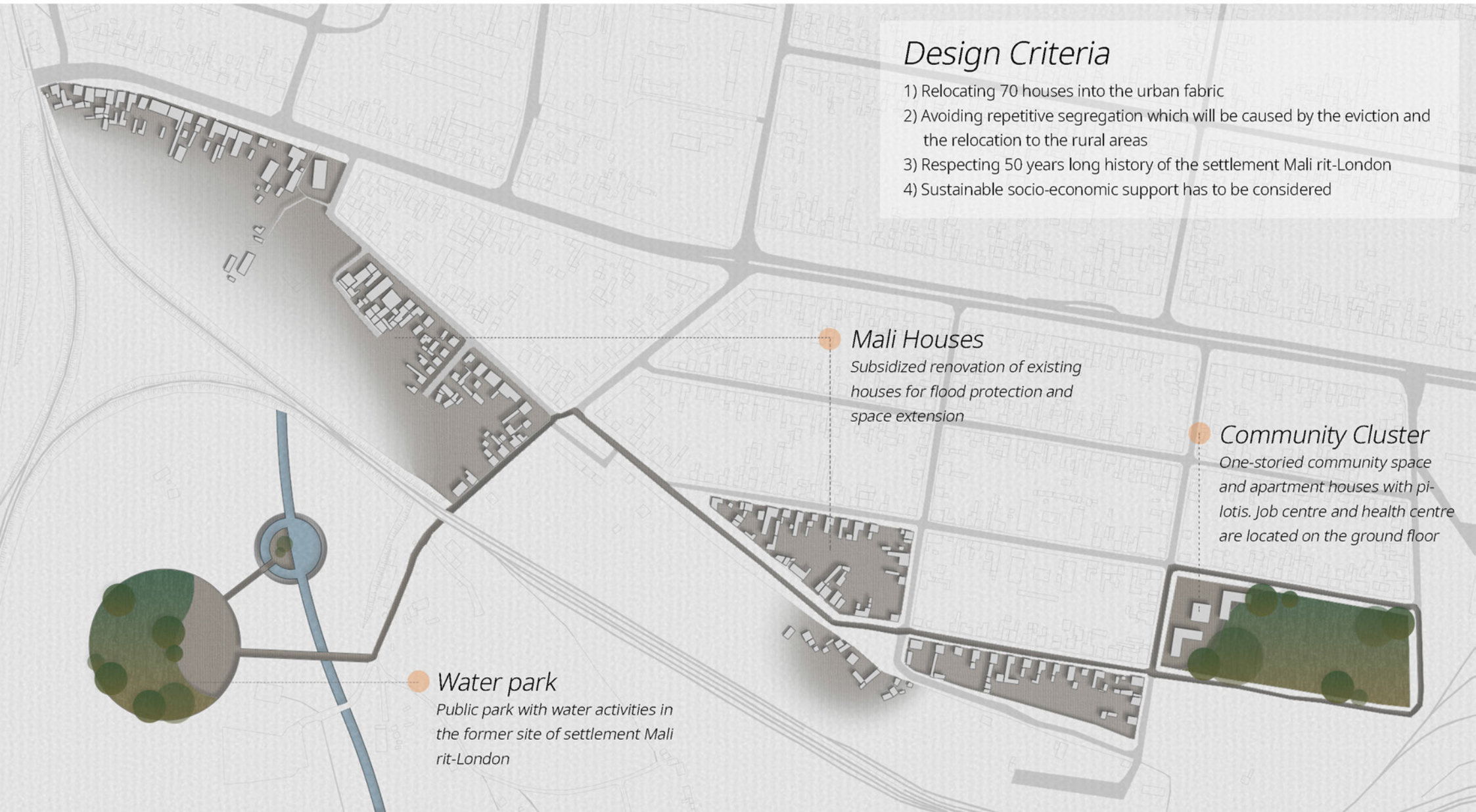


Diagnosis

- Urban facilities such as hospitals, schools and public parks are comparatively concentrated in Donji Grad.
- Therefore, the average land price of other two districts were significantly high than of Topola and Vojlovica.
- In addition, the lack of health service and public park was found in Topola.
- One organization supporting Roma women's right was found online, however, there wasn't any place where Roma people could find the support programs or could gather by themselves
- Altitude of Topola isn't low as of Mali rit-London, however, it is comparatively low and the risk of flood exists in the district due to the climate change in South-eastern Europe

Objective

1. Creating **flood-safe** city
2. Offering **good quality housing** to Roma community while **integrating Roma community into the society**
3. Providing **essential urban facilities** such as medical care, job centre and public park in the district



Design Criteria

- 1) Relocating 70 houses into the urban fabric
- 2) Avoiding repetitive segregation which will be caused by the eviction and the relocation to the rural areas
- 3) Respecting 50 years long history of the settlement Mali rit-London
- 4) Sustainable socio-economic support has to be considered

Mali Houses

Subsidized renovation of existing houses for flood protection and space extension

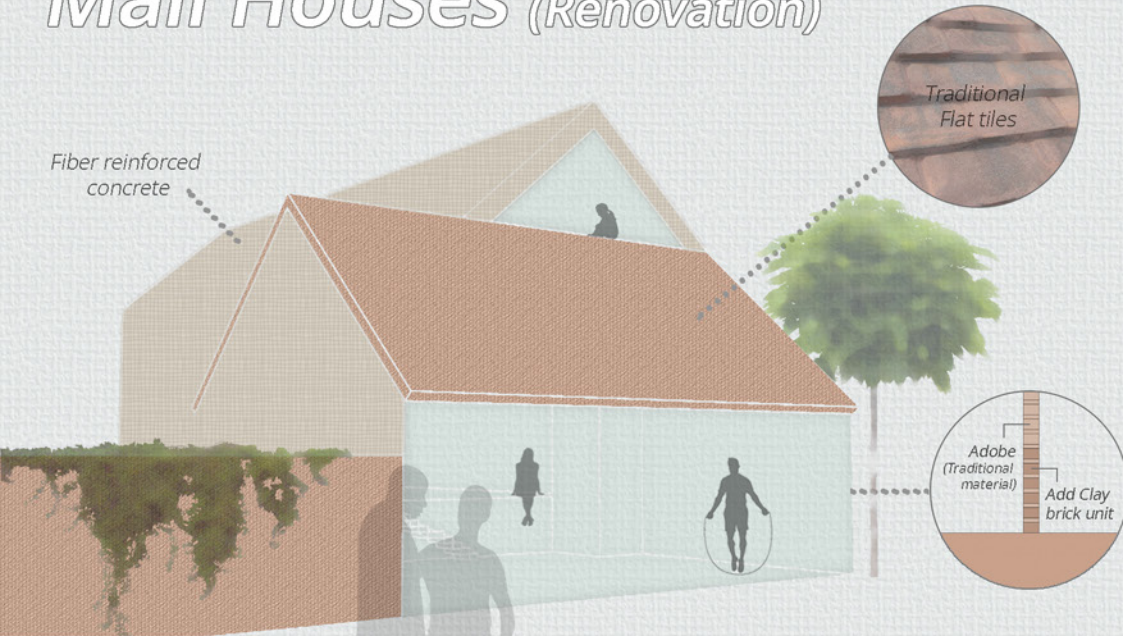
Community Cluster

One-story community space and apartment houses with pilotis. Job centre and health centre are located on the ground floor

Water park

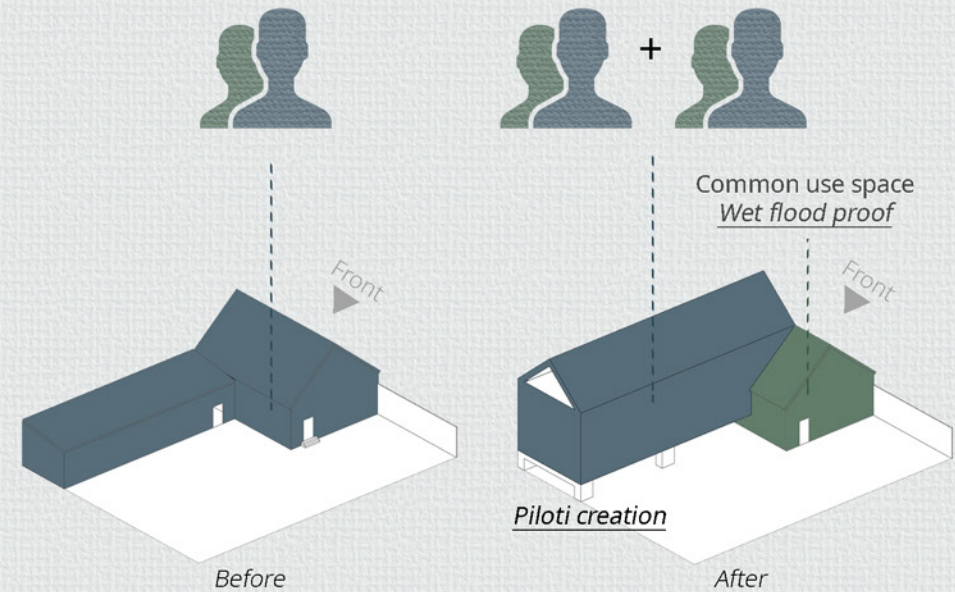
Public park with water activities in the former site of settlement Mali rit-London

Mali Houses (Renovation)



*** Financial Structure**

: The construction will be subsidized by the city government. Regarding the rental fee, the first year will be entirely covered by the land owners. The city government will partly guarantee the rent from the second year

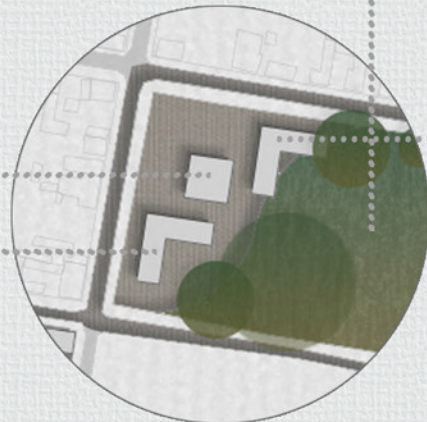


Community Cluster

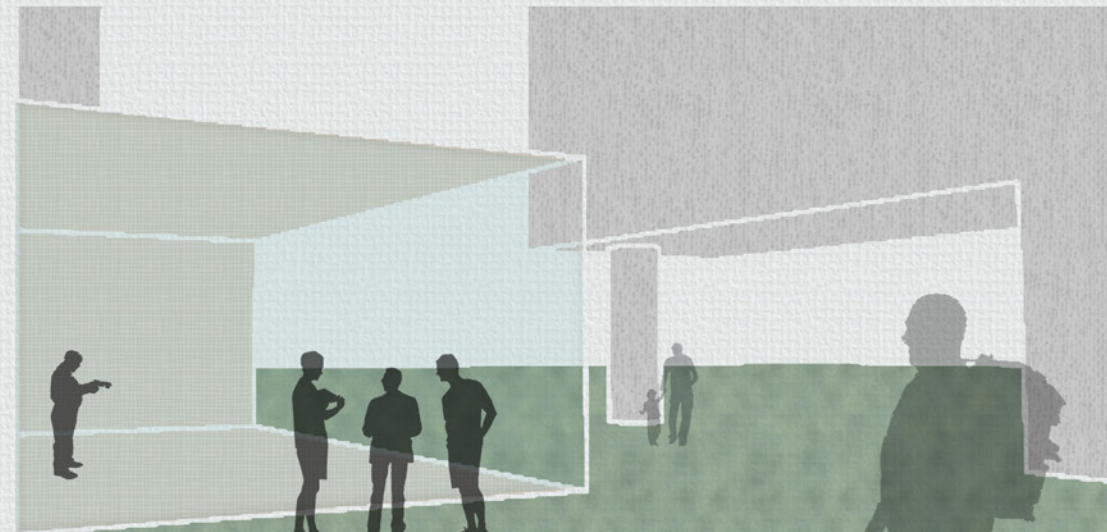
Protected Park raising flood resilience

Community space
Events, consulting and social (club) activities available

Apartment B
Health centre located 5-stories 15 social houses



Apartment A
Job centre located 5-stories 15 social houses



- Ayala, A. (2014): Regional report on housing legalization, settlement upgrading and social housing for Roma in the Western Balkans. Best practices for Roma integration. Warsaw: ODIHR.
- Carpino, L.; Žerjav, B.; Divjak, L.; Nikolić, P. (2016): Urban Plans for Substandard Roma Settlements. OSCE Mission to Serbia. Belgrade.
- Djokanović, S.; Abolmasov, B.; Jevremović, D. (2016): GIS application for landfill site selection: a case study in Pančevo, Serbia. In Bull Eng Geol Environ 75 (3), pp. 1273–1299. DOI: 10.1007/s10064-016-0888-0.
- Ferguson, B.; Navarrete, J. (2003): A financial framework for reducing slums: lessons from experience in Latin America. Environment&Urbanization 15 (2), pp. 201-216.
- Google. (n.d.): Serbia Pancevo. Retrieved from <https://goo.gl/maps/9hjn2LeNjwKXUpV48>.
- Grad Pančevo. (2012): PDR Mali Rit. Retrieved from <http://www.pancevo.rs/urbanizam/pdr-podrucja-mali-rit?cir=lat>.
- McEntire, D. (2011): Understanding and reducing vulnerability: from the approach of liabilities and capabilities. In Disaster Prev and Management 20 (3), pp. 294–313. DOI: 10.1108/09653561111141736.
- ODIHR (2006): Roma Housing and Settlements in South Eastern Europe. Profile and Achievements in Serbia in a Comparative Framework. OSCE Office for Democratic Institutions and Human Rights. Warsaw.
- Pelling, M. (2003): The vulnerability of cities. Natural disasters and social resilience. London, Sterling VA: Earthscan Publications.
- Popovic, M. J.; Ignjatović, D. (2012): Atlas of Family Housing in Serbia. Faculty of Architecture, University of Belgrade GIZ - Deutsche Gesellschaft für Internationale Zusammenarbeit. Belgrade.
- San Bartolomé, A.; Quiun, D.; Cabrera, D.; Huaynate, W.; Romero, I.; Pereyra, J. (2013): Experimental study on adobe walls with long term water exposure due to floods. 12th Canadian Masonry Symposium. Vancouver.
- Schwarz, U.; Pokrajac, S.; Bockmühl, K.; Stolpe, G. (2017): Nature-based solutions for flood risk prevention in South-Eastern Europe. Bundesamt für Naturschutz. Bonn.
- Sladana, J.; Robert, B. (2014): Assessment of the Situation in Substandard Settlements in 21 Municipalities in Serbia. Edited by Boris Žerjav. Belgrade.
- UN/OCHA (2008): Transitional Settlement Reconstruction After Natural Disasters. UN.
- Živković, L.; Đorđević, A. (2015): General characteristics of substandard Roma settlements in Serbia and a proposal for further development initiatives for the improvement of the living conditions of the Roma community. Belgrade: OSCE Mission to Serbia.